



Anti-Ligature Wall Mounted Stainless Steel Shelf

Datasheet

CODE: 145772

Construction

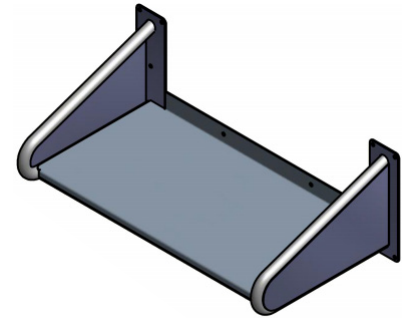
3/4"Ø x 0.49W Stainless Steel Tube

14 gauge Stainless Steel seat top welded to frame to complete a single form structure.

14 gauge stainless steel wall plates

15x 6.5Ø Mounting holes.

Glass Bead Blast Finish

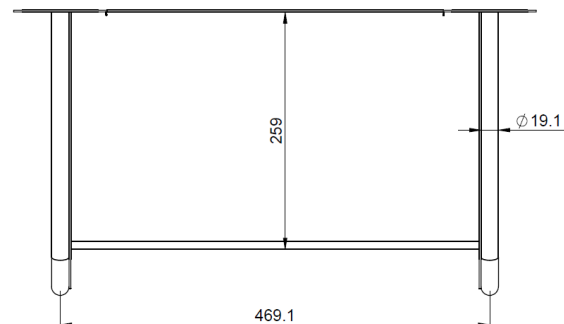
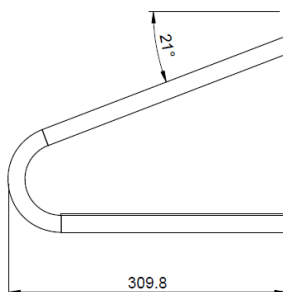
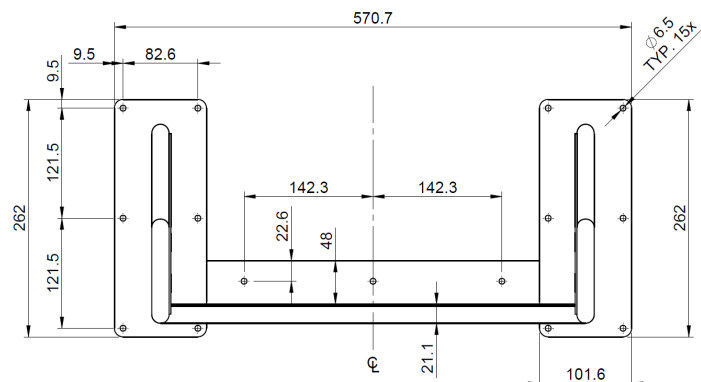
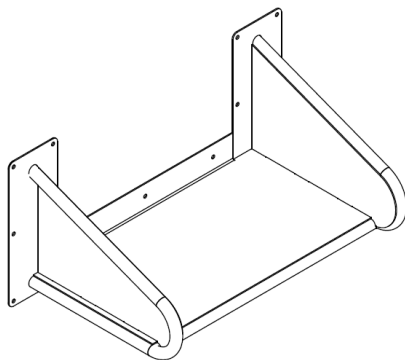


Installation

Use seat as template for locating all [15] mounting holes.

CONFORMITY AND COMPLIANCE TO LOCAL AND NATIONAL CODES IS THE RESPONSIBILITY OF THE INSTALLER. SHELF IS ONLY AS STRONG AS THE ANCHORING DEVICES AND THE WALL ON WHICH IT IS MOUNTED TO. ADEQUATE IN-WALL BACKING MAY BE REQUIRED.

TAMPER RESISTANT SECURITY SEALANT MUST BE USED ON ALL WALL GAPS



ABOUT HIPAC

We are an Australian healthcare company that guarantees to stand behind all our medical products, both manufactured and imported, because we're here for the life of our products and clients.

hipac.com.au

ABN 27 600 353 688