



## Double Swing Hinge

### Datasheet

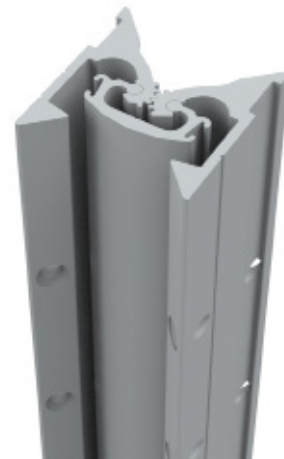
#### Product Codes

114616 - 2100mm [to suit 44mm door]

119211 - 2400mm [to suit 44mm door]

#### Description

This solution is ideal for doors that need to swing 90° in both directions (180°) and eliminates the possibility of pivot doors splitting on impact. It provides an ideal solution for busy corridor doors which are exposed to impact damage.



#### Specifications

- Double Acting; Single or Double Door Configuration
- Hinge Length: 2100 or 2400mm.
- Performance Rating: BS EN 1935 equivalent
- Category of use Grade 4 severe duty
- 0.5mm wire test to DHF TS 001:2013 B4
- Door Weight 160kg Grade 6 for severe duty DD171
- Colour: Satin Anodised Aluminium [SAA]
- Fixing: as per manufacturers recommendations.
- UK Patent GB 2451 276A

#### Testing

- Performance Tested to European Standard BS EN:1953
- Tested to DHF TS 001:2013 B4 (0.5mm wire test)

#### Maintenance and Cleaning

The Double Swing Hinge operates by a number of interlocking gears that provide high strength and smooth motion. They require minimal maintenance, by following the procedures below on a quarterly basis the product will perform effectively.

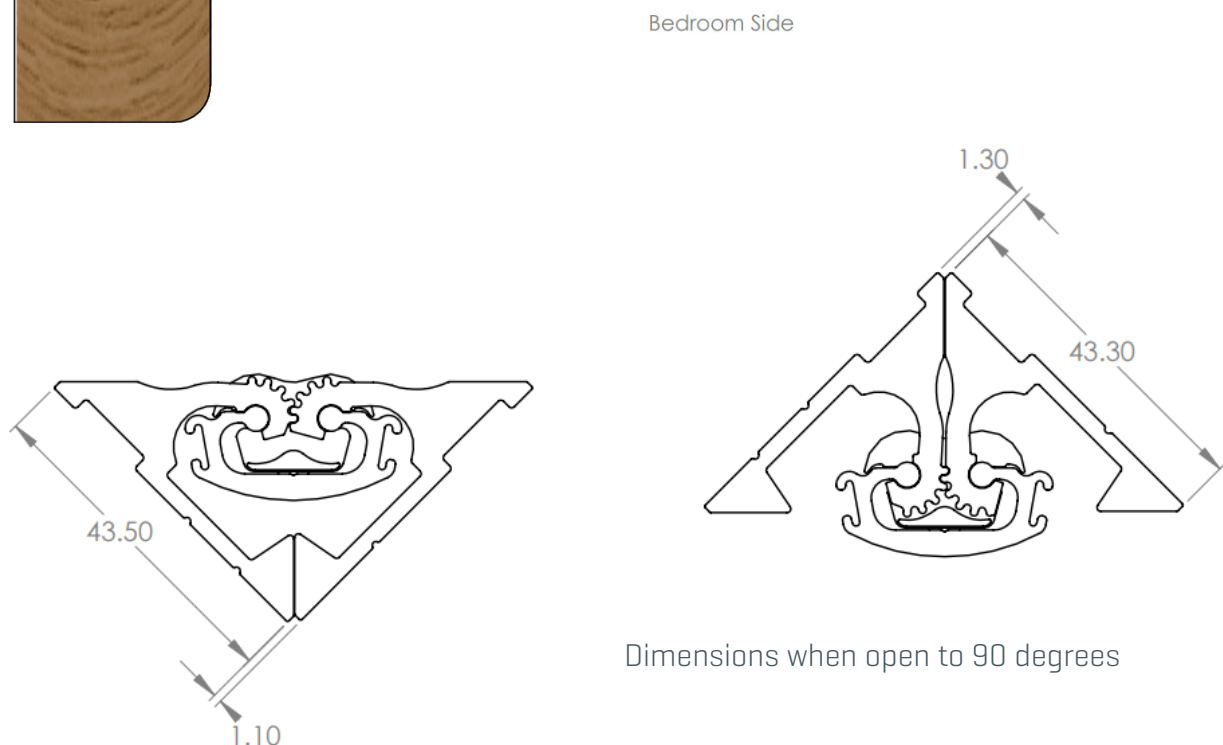
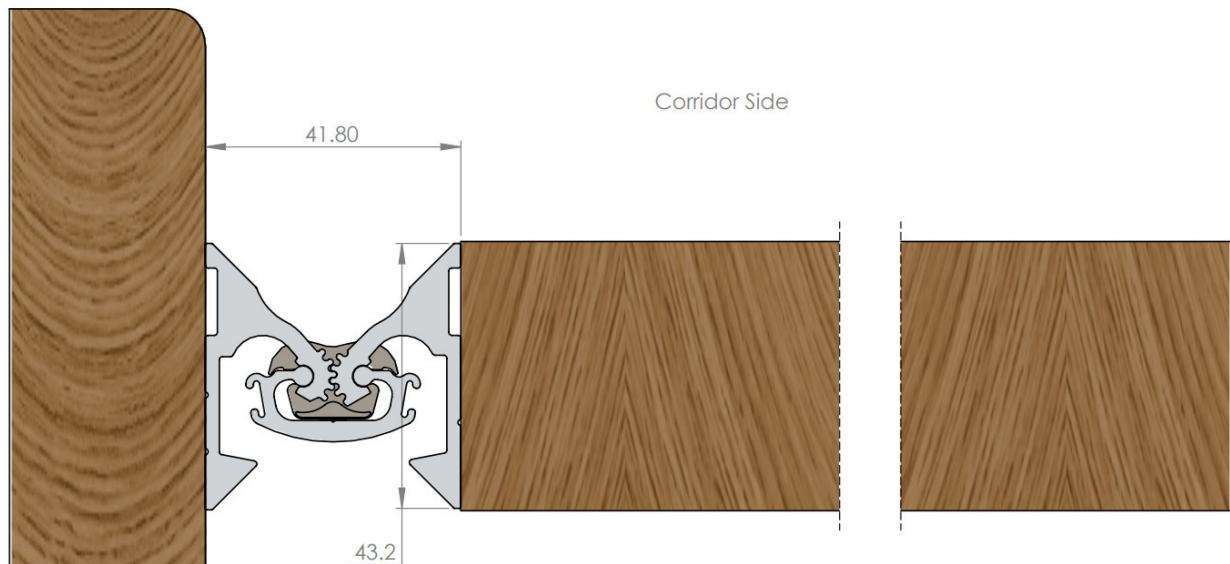
- Check the gears are free from dust/debris.
- Check the bearings are free from cracks.
- Check all fixings are present and tightened sufficiently.
- If dirty wipe down with warm soapy water.
- Check for any sharp edges caused by impact damage and file smooth if necessary.





## Double Swing Hinge

### Datasheet



Dimensions when open to 90 degrees

This hinge is limited to swinging 90° in each direction, it is recommended that a doorstop be installed to restrict the door at or before 90° to prevent damage to the door leaf, frame, or hinge.

#### ABOUT HIPAC

We are an Australian healthcare company that guarantees to stand behind all our medical products, both manufactured and imported, because we're here for the life of our products and clients.